

PARTEX GYPSUM CEILING

Partex Gypsum is always committed to provide innovative ceiling boards, bringing a new level of aesthetic dimensions to your inner world. We offer our new pattern collection of ceiling boards to adorn the ceilings of your interiors. These are high in quality and offer numerous advantages over the traditional boards. Not only are their look and appeal different but also the features and applications making them suitable for decoration and designing of contemporary buildings.

Being a trusted gypsum ceiling boards manufacturer, Partex Gypsum guarantees a certified quality of ceiling boards which are easy to install, economical, efficient and durable. What stands behind the long lasting performance and life of our boards is that we use raw materials of unmatched quality in the production.

Ideal for adding value and beauty to the ceiling of the interiors, our excellent Gypsum Ceiling Boards are in huge demand in the market. They are considered as the beautiful as well as cost-effective option to enhance the beauty of the establishments. Its safety, added with fire-resistance and moisture-resistance makes every single ceiling board a masterpiece that adds value to the place.

Features

1. Ceiling Boards are manufactured from lower thickness gypsum plasterboards.
2. High quality beautiful PVC film is laminated on the face side of board.
3. At the back, aluminum foil is laminated.
4. Light weight, versatile ceiling boards manufactured by Partex Gypsum boards.
5. Metal grid which can also provide fire, sound and thermal insulation.
6. Specific glue for laminating PVC film and aluminum foil is used which has no health hazards at all.

Usage Areas

- Residential projects
- Offices
- Hotels
- Restaurants
- Schools
- Laboratories
- Laundries
- Leisure facilities
- Medical centers and hospitals

Special Features

- Heat proof and sound insulated
- Easy, and efficient to install
- Comprised of non-toxic and environmentally friendly components
- No joint marks and smooth surface
- Boards are manufactured according to ASTM standards C-1396, tested according to ASTM C 36-85 and conformed to BS -1230 standards

Available Sizes and Thickness

603 mm x 603 mm x 8 mm

603 mm x 603 mm x 9 mm

603 mm x 603 mm x 12 mm

603 mm x 1212 mm x 9 mm

AVAILABLE DESIGNS



Item : Islamic
Code : 567



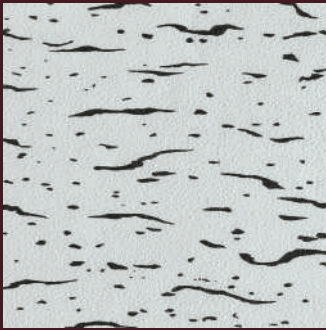
Item : Shade - 1
Code : 154



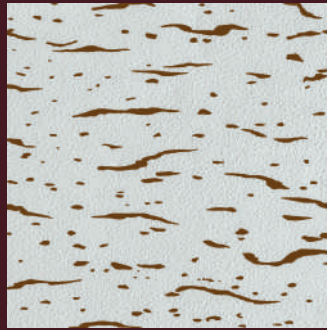
Item : Flower
Code : 239



Item : Bamboo
Code : 996



Item : Fissured (Black)
Code : 631



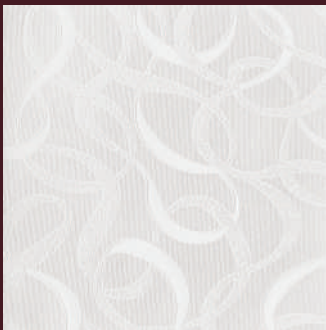
Item : Fissured (Brown)
Code : 631



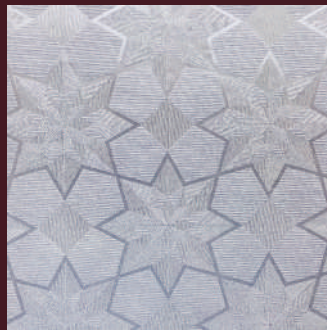
Item : Diamond Stone
Code : 238



Item : Rombas
Code : 997



Item : Ribbon
Code : 500



Item : Star (Silver)
Code : 125 - 3



Item : Islamic Flower
Code : 244



**EASY
INSTALLATION**



**UNIFORM
THICKNESS**



**ABILITY TO NEUTRALIZE
INTERIOR CLIMATE**



**AESTHETIC
APPEAL**



**LIGHT
WEIGHT**



**INSECT
RESISTANT**



**ENVIRONMENT
FRIENDLY**

Corporate Office: Shanta Western Tower, Level-13
186 Tejgaon Industrial Area, Dhaka-1208. Phone: +88 02 887 8800

Sales Office: 68 Tejgaon Industrial Area, Dhaka-1208. Phone: +88 02 9104 188

Factory: Madanpur, Bandar, Narayanganj

+88 01313012616

✉ partexgypsum@psgbd.com 🌐 www.partexgypsumboards.com

📘 partexgypsum 🌐 partex-gypsum 📷 partex_gypsum



A concern of

